

Bring Hamptons style to your home

Interior designer *Robyn Hawke* explains the major features of Hamptons style, and how you can get it at home.

The movie *Something's Gotta Give* and the TV show *Revenge* have had a huge influence on interior design, and despite the fact they graced our screens several years ago the impact is still prevalent. No one can forget the "revenge" chair of Victoria Grayson, the family matriarch. Not only was the fabric a must, but the wing chair was the beginning of the feature chair in most lounge room designs today, where it has evolved and is now often a splash of colour added to neutral palettes.

The kitchen and living rooms in *Something's Gotta Give* are a faultless fusion of country and beach styles, and provide a perfect guide to creating this look in your home.

This style is perfect for those who have bad memories of the "country" look of the 1990s with folk art painted accessories, yet are not comfortable with the streamlined, minimalist look of modern design.

Hamptons design is a classic, sophisticated yet understated style. The name was originally coined from a group of villages called The Hamptons on Long Island, New York, the summer residences of affluent New Yorkers.

The key to this design is to have a relaxed feel with high-end finishes and a simple colour palette, with attention to joinery detail, but it has the best of both worlds as you can match old with new.

To my mind, in Australia we have fused this style with Australian country to create our own Hamptons interpretation.

It is a style that can be seen in beachfront properties, found in the country and at home in suburbia. The key elements to creating this style lie in the use of texture and the layering of elements. Texture, texture, texture is vital in pulling this look off.

The fabric used in the iconic chair that Victoria Grayson sat in often to scheme revenge is still available from Warwick Fabrics.



The white Thonet chairs used in the casual dining area are part of the perfect fusion of country and beach. Skirtings and architraves are detailed to add to the country/beach feel.



Inspired Spaces designed the bulkhead in the kitchen for both a functional and aesthetic reason. The original ceiling height was exceptionally high and created an unbalanced look within the room. By adding the detailed bulkhead, the ceiling was lowered, creating a cosier effect, and complemented the detail in the kitchen.

The island bench provided a place for informal meals as well as a place for the children to do their homework while their parents prepared meals. The black bench added colour to the white kitchen and tied in perfectly with the black grout used on the subway tile splashback. The shaker profile on doors and drawers is a vital element of Hamptons design.

KEY ELEMENTS OF AUSSIE/HAMPTONS STYLE

Essential interior architectural features

Hamptons architecture has features such as shiplap cladding, pitched ceilings, French doors and rooms with lots of light. If light is an issue in your home you can install skylights to overcome this. Walls are often treated with wainscoting.

For an entirely Hamptons look inside and out, your house would ideally be made of timber, have large verandahs, painted either blue or white, and dormer windows with manicured gardens.

Colour palette

White is traditionally the basis of the colour palette, paired with dark timber floors, enabling the details in the architecture to become a feature. However, light coloured floors work just as effectively. The advantage of the light colour floors is that they hide dust and fluff — especially important if you have pets inside the home.

Kitchen details

The island bench is a must, with the benchtop often made from timber highlighted with pendant lights. The other benchtops are made traditionally from Carrara or Calcutta marble, although in Australia we are more likely to use an engineered stone made to emulate this product.

If you decide on darker benchtops, the cupboards need to be white. The joinery is key to creating this look, with the door and drawers in a shaker profile with detail on end panels. Handles are integral to this look. Splashbacks are composed of subway tiles often in white, but if you wish to add some colour to the space, use pale greys, blues or greens.

To be truly authentic install a butler's sink, giving you the added advantage of a deep sink.

Furniture

Oversized, soft upholstered lounges in light coloured linen. However, I strongly suggest that for busy Australian families you use fabrics that create this look without the upkeep of pure linen, paired with cushions and throws in blues, greens and greys, although any colour can be used if they are subdued. White wicker furniture is also a feature, with fabric seats.

Accessories

Textured rugs are vital for designating use of space, and are often striped or in natural materials such as sisal. If carpet is preferred in bedrooms then sisal is again used.

For a traditional Hamptons look, display shells, driftwood or anything beach related in large glass domes. For a more sophisticated look, or if you do not live on the coast, use large bowls and vases. Floor and table lamps are also elements of this style.

Window treatments

Windows ideally should be large French doors, painted white, opening onto a large verandah, and dressed in sheer breezy linen curtains. Shutters can also be used.



For a truly authentic Hamptons feel use a butler's sink like the one from OKAB group. The big, deep sinks are fantastic for washing large saucepans and pans. www.okabgroup.com.au



This room, designed by Inspired Spaces, uses fabric lounges paired with light coloured, oversized chairs. As this was a family with young children, we have used darker colours for everyday functionality and still created the Hampton look. The joinery housing the TV has all the elements typical of a Hamptons style such as shiplap, shaker profile doors with a nod to technology, the mesh front on one door to allow the remote to work. The nautical floor lamp adds to the overall Hamptons feel.

Inspired SPACES

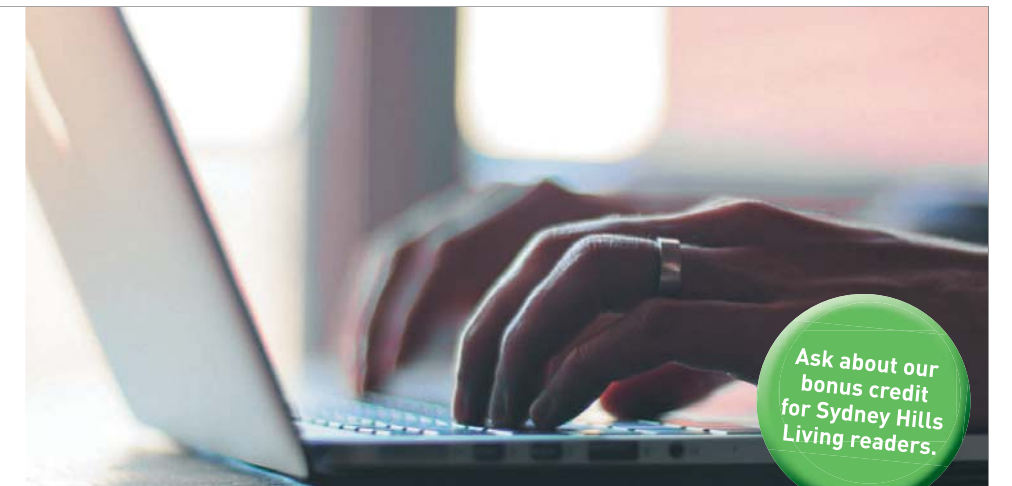
Robyn Hawke is an interior designer in the Hills. She is the director of Inspired Spaces, and can be contacted at robyn@inspiredspaces.com.au or 0401 068 670. www.inspiredspaces.com.au

Article Writers AUSTRALIA

Content that works!

- Business blog writing
- Newsletters
- Content strategy help
- Monthly packages (no contracts!)

Call to arrange an obligation free content review and strategy discussion. Ph: 1300 880 543 www.articlewriters.com.au



Ask about our bonus credit for Sydney Hills Living readers.